



Venue Brochure

Night tates

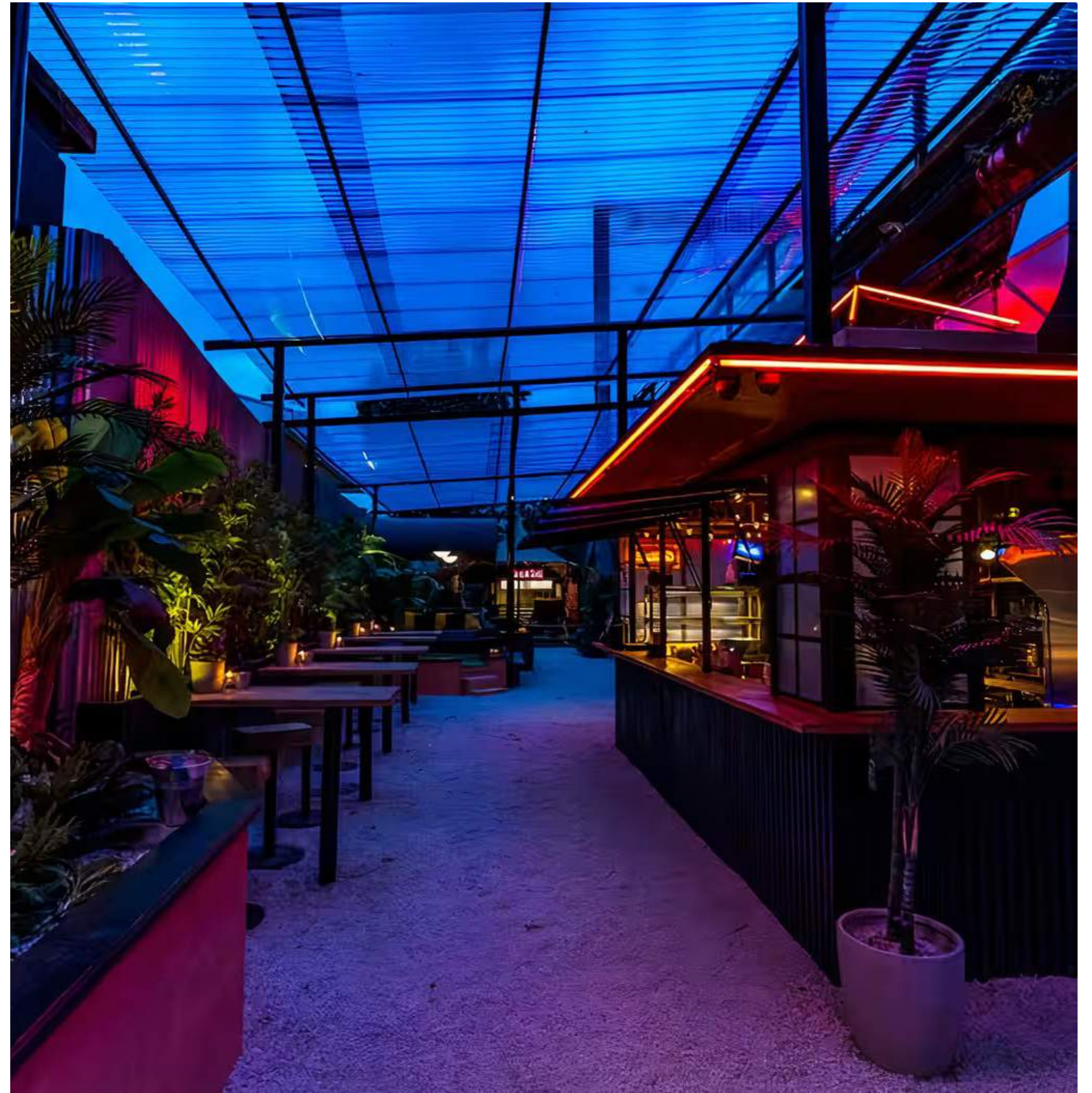
About the venue.

Boasting beautiful indoor and outdoor spaces, Night Tales is a unique 650 capacity late night venue split across three multifunctional event spaces, with three buzzing bars, a street food kitchen and a heated and covered garden, in the heart of Hackney.

The venue features a beautiful clear canopy to let the sunshine in, with heating throughout to ensure guests are kept warm and dry throughout the seasons.

Its versatility and unique aesthetic make Night Tales the ideal destination for brand activations, product launches, corporate parties or wedding receptions.

The full venue is available every day with various semi-private hire options to cater for your specific event requirements.



Exclusive Venue Hire.

Spanned over 9000 sq ft with a 600 capacity, Night Tales boasts a mix of indoor and outdoor space. The venue offers multiple branding opportunities to create a unique atmosphere.

With two private event spaces, four bars, a street food kitchen, and a heated garden, Night Tales provides a range of entertainment options, underneath a canopy of festoon lights.

The mixture of raised daybeds, intimate sofa booths, and banquet-style tables ensure a wide variety of seating arrangements.

The full venue is available for hire every day, with extended hours on weekends.

CAPACITY Standing 650 | Seated 250 | Theatre 120



The Palm Bar.

Located under one of the three epic railway arches, The Palm bar is a private event space that features a 360° access bar, wrapped around a giant palm tree creating an immersive atmosphere.

With its smart layout, The Palm Bar can operate as a self sufficient space due to its own DJ booth, DJ kit and toilets.

Guests can use this space privately for drinks receptions and dancing, taking advantage of the cosy sofa seating options as well as banquet seating and tables.

The Palm Bar is available Friday & Saturday from 18:00 to 03:00 and Sunday to Thursday, from 10:00 to 00:00 with extensions available on request.



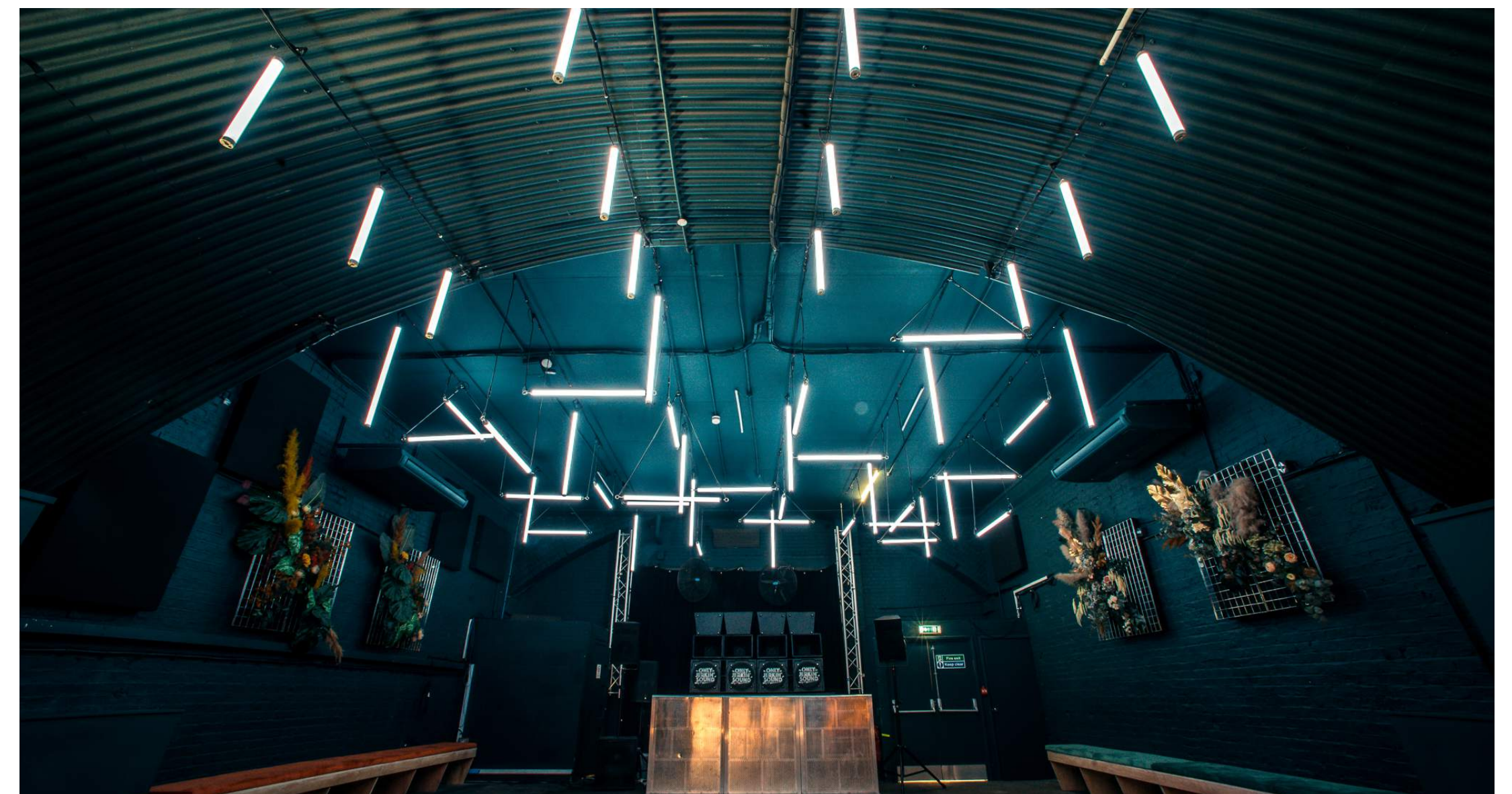
The Club.

A private event space packed with state of the art lighting and sound equipment to create a multi-sensory experience for the perfect event.

Adaptable to various requirements, this versatile space also lends itself perfectly for presentations or standing receptions.

The Club is available on its own Sunday to Thursday, from 10:00 to 00:00 with extensions available on request.

On Friday and Saturday The Club is available from 10:00 to 03:00, as part of the exclusive venue hire.



The Garden.

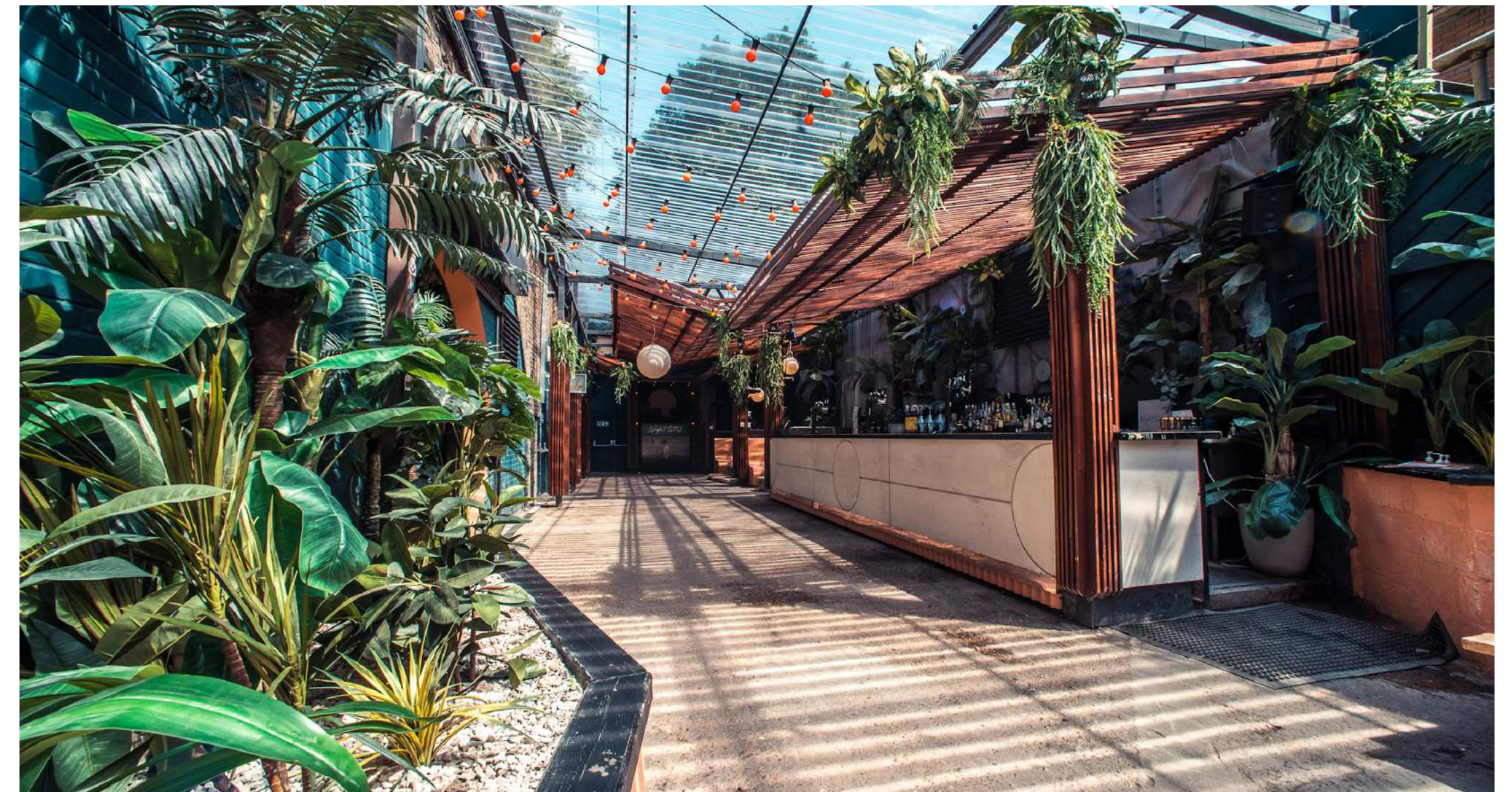
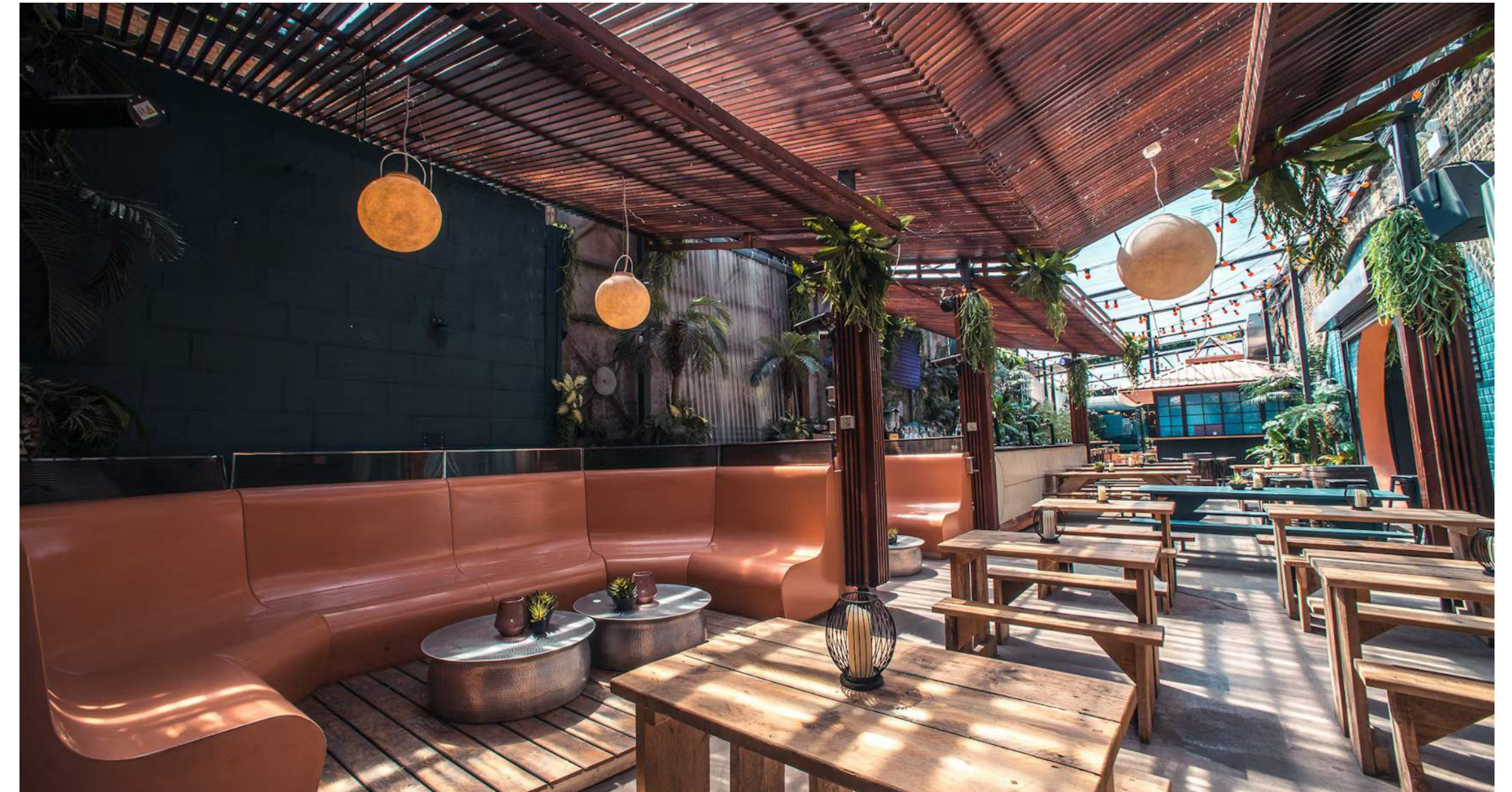
Night Tales boasts East London's largest weatherproof terrace, spanning 6000 sq ft, complete with its own bar and street food kitchen, creating an ideal backdrop for corporate gatherings or cocktail receptions.

Stretching along the entirety of Night Tales' iconic three railway arches, the garden features state-of-the-art lighting design and sound systems, transforming the space into a vibrant oasis when the sun sets.

This area can be reserved exclusively for drink receptions or corporate parties.

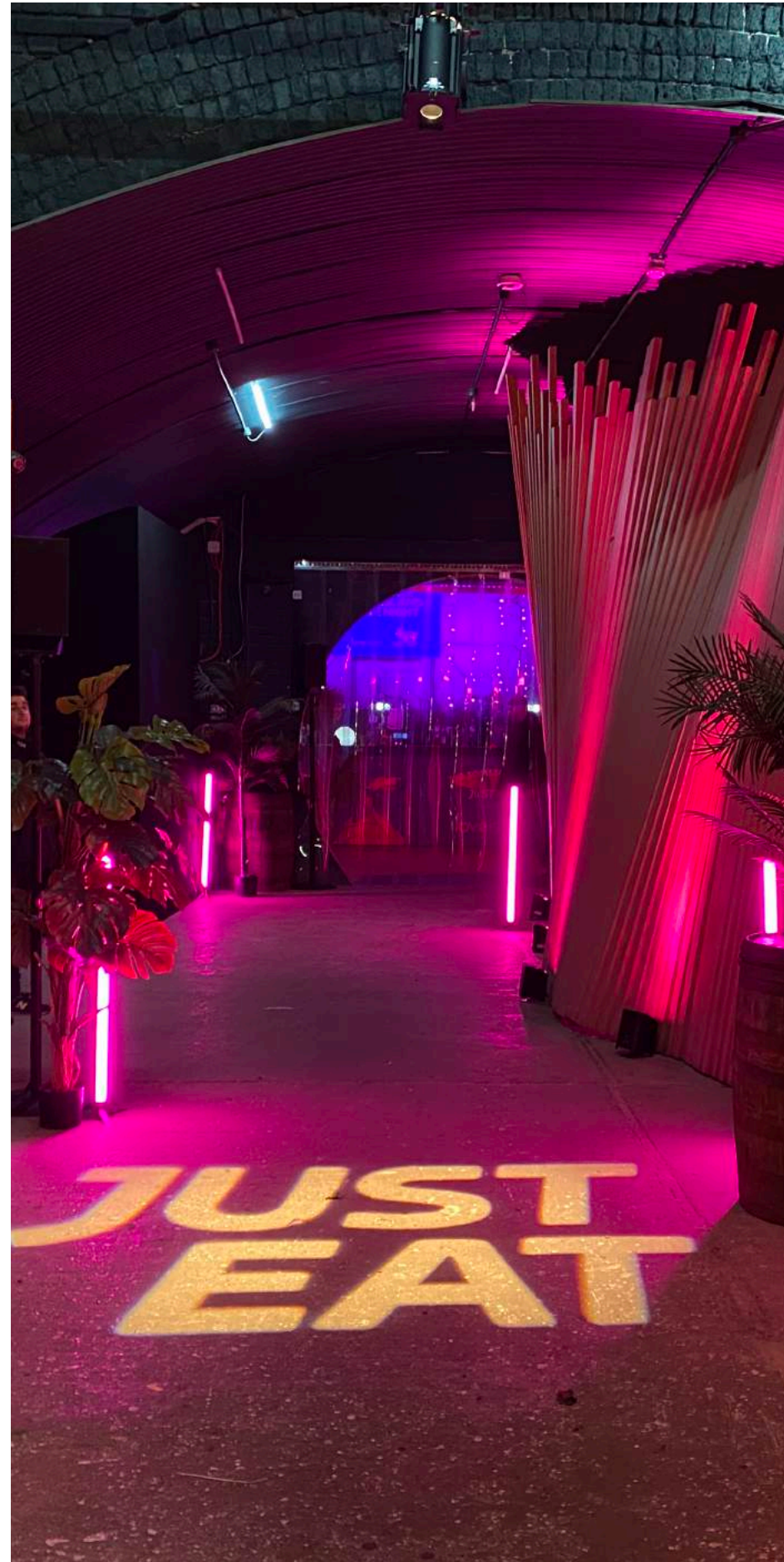
The Garden is available on its own Sunday to Thursday, from 10:00 to 00:00 with extensions available on request.

On Friday and Saturday The Garden is available from 10:00 to 03:00, as part of the exclusive venue hire.



CAPACITY Standing 400

What we've done.



Food & Drinks.

Featuring three bars offering seasonal signature and a selection of draught beers and carefully selected wines, our venue showcases a list of seasonally changing drinks, fully customisable for your event. Drink packages include:

STANDARD DRINK PACKAGE | Up to 4 hours

Unlimited House Beer, House Wine, Single Spirit & Mixer and Soft Drinks

PREMIUM DRINK PACKAGE | Up to 4 hours

Cocktail or Prosecco on arrival, Unlimited House Beer, House Wine, Single Spirit & Mixer and Soft Drinks

ULTIMATE DRINK PACKAGE | Up to 5 hours

Unlimited Cocktails, Prosecco, House Beer, House Wine, Single Spirit & Mixer and Soft Drinks

Package extensions available upon request.

We proudly collaborate with London's most exciting caterers, including [Sons of Slice](#), [Canababes](#), [Funthyme](#) and [Dinner Ladies](#)! From healthy bites to indulgent treats, buffet and banquet to 3 course meals, there's something for every taste!

Catering menus are available upon request.

Kitchen specs can be found [here](#).

External catering is subject to approval and £500 buyout fee.



Venue Highlights.

Expertise in Event Planning

Our dedicated event team will assist you throughout the entire process, offering guidance on production, layout, entertainment options, and F&B packages. Each event is customised with care. If you have any specific requests, just let us know!

Branding Opportunities

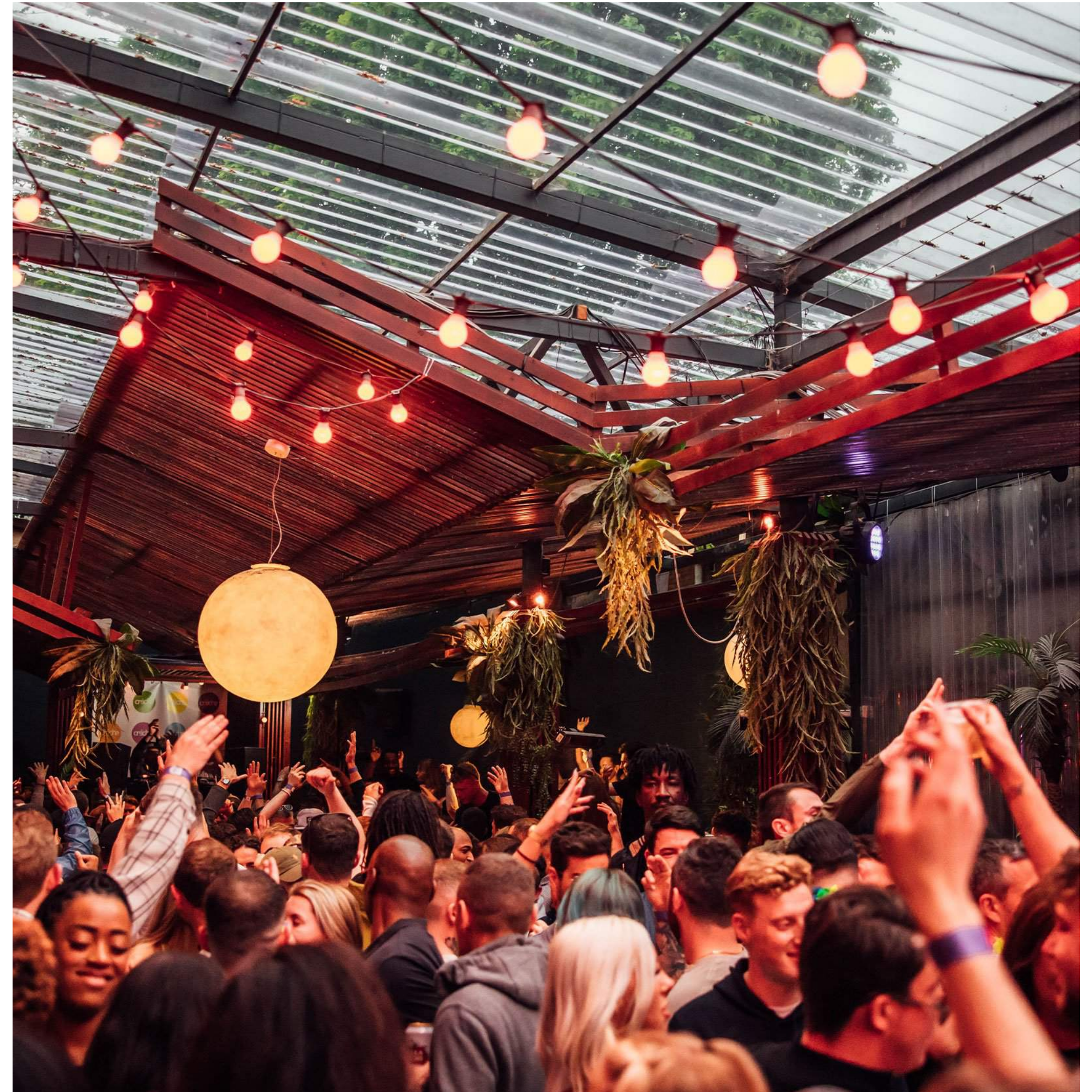
A large range of branding options are available throughout the venue, including window, mirror & floor vinyls, bar & DJ booth branding as well as custom wall graphics to maximise impact. A branding deck is available upon request.

Comprehensive Technical Package

The venue is equipped with a brand new Funktion-One sound system and Pioneer DJ kit. The venue also has a stage space, ideal for DJ sets and Live music or entertainment.

Weather-Ready

The terrace space has a canopy roof and a full heating system to ensure your event runs smoothly and stays dry, whatever the weather.



Venue Highlights.

Outside Space

Guests can enjoy the fresh air and urban views, socialise or relax in the sunshine.

In-House Kitchen

Our self-contained kitchen specs can be found [here](#).

High-Speed WiFi

Guests can enjoy high-speed WiFi access throughout the venue.

Venue Furniture

The venue showcases a selection of raised daybeds, intimate sofa booths, and banquet-style tables to ensure a wide variety of seating arrangements.

Make it your own!

We offer a range of additional features and services to enhance your event experience. Let us know your ideas, and we will work with you to bring them to life.



Tech Specs & Power.

CLUB

SPEAKERS

2 x Funktion One EV06
4 x Funktion One F121 Subs
2 x Funktion One F101 Front Fill

DJ MONITORS

2 x Funktion One F1201
2 x Funktion One BR118 Sub

DJ BOOTH

H101cm x D61cm x L244cm

PALM BAR

SPEAKERS

2 x Funktion One F1201
2 x Funktion One BR118
1 x ElectroVoice EKX12 Passive

DJ MONITORS

1 x ElectroVoice EKX12

DJ BOOTH

H106cm x D62cm x L156cm

GARDEN

SPEAKERS

2 x Funktion One F101
1 x Funktion One BR118
2 x Funktion One F101 Delays
3 x Funktion One F81 Delays

DJ MONITORS

2 x Funktion One F101
1 x Funktion One SB210A Sub

DJ BOOTH

H95cm x D61cm x L244cm

DJ KIT

Allen & Heath Xone:92
Allen & Heath Xone:96
Pioneer DJM-V10
Pioneer DJM900NXS2
Formula Sound FF4.2R

4 x Technics SL1210MK2
2 x Pioneer CDJ 2000 Nexus
4 x Pioneer CDJ 2000 NXS2
2 x SM58 microphones
Ortofon Concorde Cartridges (w/ 'Mix' Needles)

KITCHEN

2 x C32 amp sockets
6 x 13 amp sockets

CLUB

4 x C32 amp DJ sockets
4 x double 13 amp sockets
(behind the bar)

GARDEN

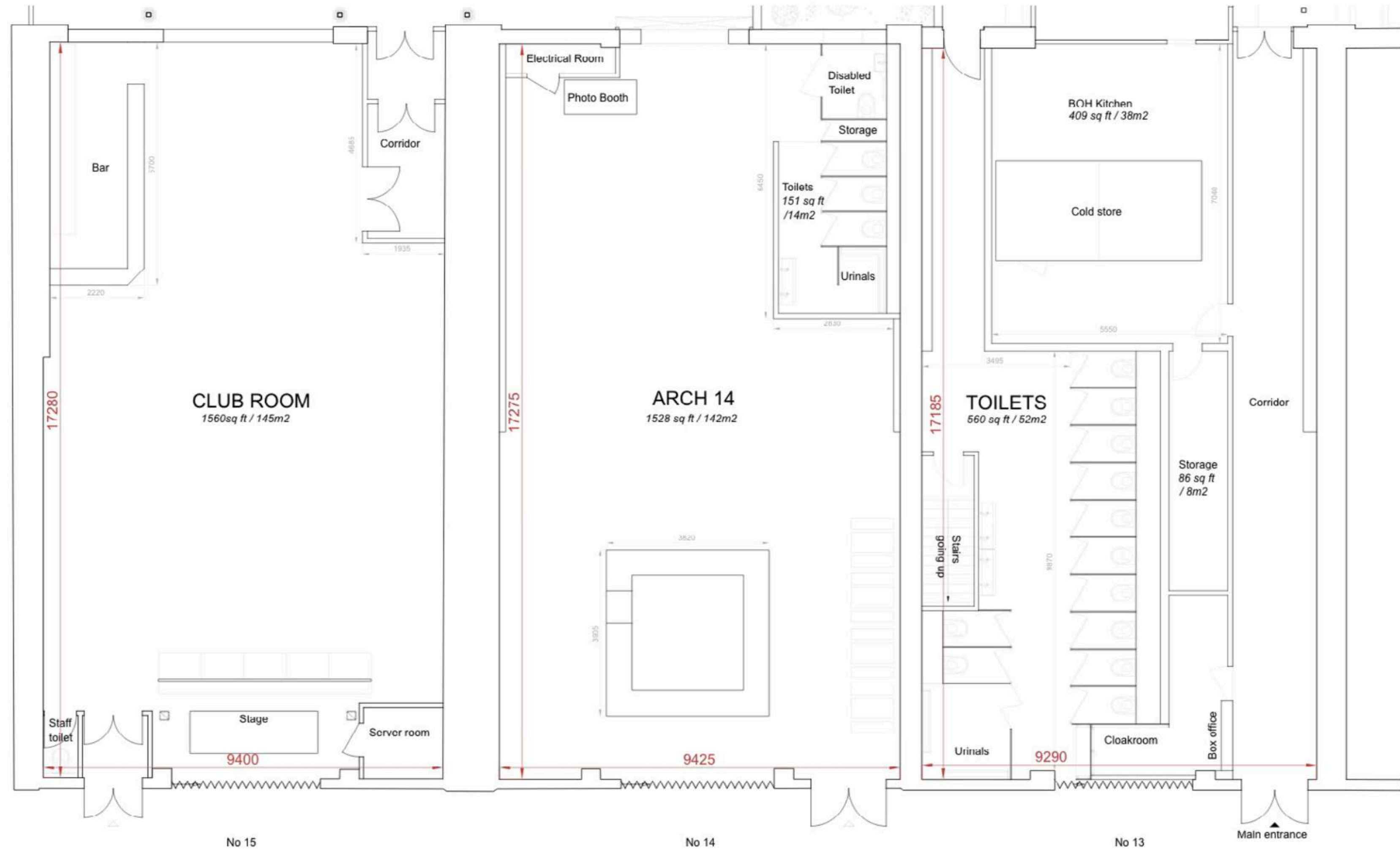
Limited power available.
Additional power supplied on request
and subject to approval

PALM BAR + EXT. WALL

Left: 4 x double 13 amp sockets
Right: 3 x double 13 amp sockets
Left: 1 x C32 amp sockets (Food Trucks)
Right: 1 x C16 amp sockets (Food Trucks)

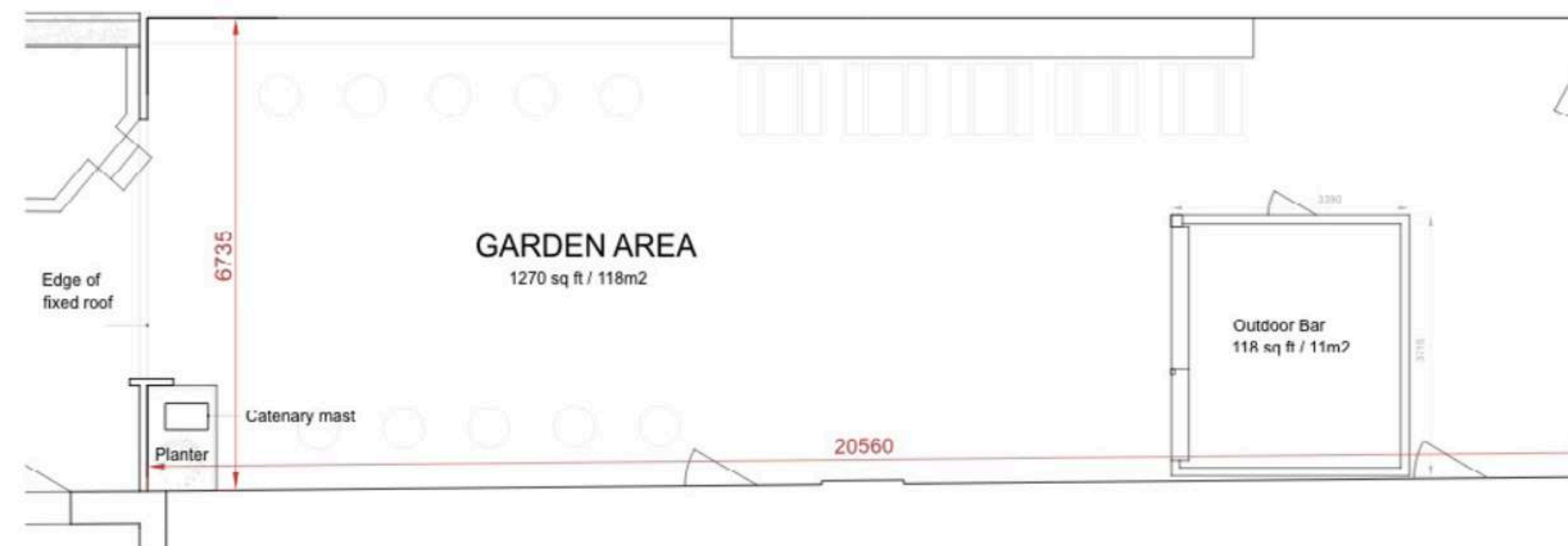
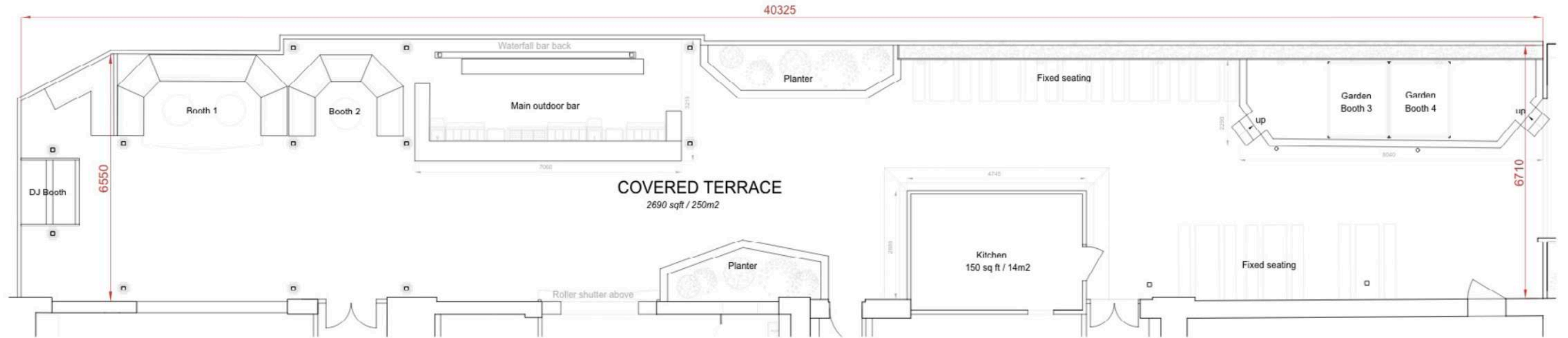
Floor Plan.

ARCHES



Floor Plan.

GARDEN



FAQS.

LOCATION & ACCESS

14 Bohemia Place, London E8 1DU.

Bohemia Place is accessible via Mare Street. The venue is on ground level with disabled access via the main entrance.

HIRE TIMES

Sunday - Thursday | 08:00 - 00:00

Friday - Saturday | 08:00 - 03:00

Extensions are available on request.

LICENSING

The venue has a premises licence which covers entertainment, sporting events, live & recorded music, provision and sale of alcohol and late night refreshments.

TRANSPORT

Overground | Hackney Central (3 mins) Hackney Downs (9 mins)

Bus | 30, 38, 55, 106, 236, 242, 254, 276, 277, 394

Our taxi partner can arrange private transport for your event.

FLOOR PLANS

PDF floor plans can be found [here](#).

DWG floor plans can be shared upon request.

CAPACITIES

Full Venue | Standing 650 | Seated 250 | Theatre 120

Palm Bar | Standing 200 | Seated 100 | Theatre 120

Club | Standing 200 | Seated 100 | Theatre 120

Garden | Standing 400

Capacities may vary subject to seating, production and activities.

VENUE FURNITURE

The venue hire fee includes a range of tables, rugs and seats. You can find the full inventory [here](#). Please note that the list of furniture available may change, please speak to your Event Manager for more details.

CLOAKROOM

Our cloakroom can accommodate up to 300 coats and 100 bags.

DAMAGE DEPOSIT

A minimum damage deposit of a minimum of £1,000 is required. The deposit will be returned, if no damage caused, within 14 days post event.

PAYMENT

All fees are payable in full prior to access on site. Upon confirmation, your Event Manager will confirm your payment plan, which is 50% of venue hire and a signed contract within one week, and the remaining 50% two months prior to the event. Once a signed contract is received, the client is liable for cancellation fees as stipulated in the venue hire agreement.

They were here.

ASOS



SONY



Asahi



**PIZZA
PILGRIMS**



PIRATE.COM

Get in touch.

events@nighttales.co.uk | 02081 564 674